

# TOWNHALL MEETING PRESENTATION

PRESENTATION BY IGNATIUS ASAAH MENSAH  
DISTRICT CHIEF EXECUTIVE – MPOHOR DISTRICT



# BRIEF HISTORY OF MPOHOR DISTRICT

- ▶ The Mpohor District Assembly was carved out of the then Mpohor Wassa East District Assembly in 2012 under the L.I. 2019.
- ▶ The administrative capital of the Assembly is Mpohor
- ▶ The Assembly is composed of 21 members; 13 elected, 6 appointed, 1 Member of Parliament and 1 District Chief Executive
- ▶ It has four Area Councils: Mpohor, Ayiem, Adum Bansa and Manso
- ▶ The Assembly is the highest Administrative body in the District.
- ▶ The General Assembly is headed by the Presiding Member
- ▶ The General Assembly meets to deliberate on issues concerning the overall development of the District.

# PROFILE CONTINUES

- ▶ The Assembly has two Committees:
  - **Executive Committee** comprising Five Statutory Sub-Committees:
    - ▶ Works
    - ▶ Development Planning
    - ▶ Social Services
    - ▶ Justice and Security
    - ▶ Finance and Administration
  - **Public Relations and Complaints Committee**

# Legislative Instrument

- ▶ The 1992 Constitution of the Republic of Ghana (Chapter 20), which enshrines decentralization policy
- ▶ The Civil Service Law 1993 (PNDC Law 327)
- ▶ The Local Government Act ( Act 462, 1993) which provides the legal basis for the implementation of decentralization
- ▶ The District Assembly Common Fund Act (Act 455, 1993)
- ▶ The National Development Planning Commission Act Act 479)
- ▶ The Development Planning Systems Act, 1994 (Act 480)
- ▶ The Town and Country Ordinance of 1945 (Cap 84)

# Legislative Instrument

- ▶ The Local Government ( Urban, Area, Zonal and Town Councils and Unit Committees ) E.I. 2010, L.I. 1967
- ▶ The Local Government (Departments of the Assemblies Commencement Instrument (L.I. 1961)
- ▶ Financial Administration Act, 2003 (Act 654)
- ▶ Public Procurement Act 2003 (Act 663)
- ▶ Internal Audit Agency Act, 2003 (Act 658)
- ▶ Ghana Audit Service Act, 2000 (Act 584)
- ▶ Internal Revenue Act, 2005 (Act fo noitartsigeR-(684 ssenisuB
- ▶ Financial Administration Regulations, 2004 ( L.I. 1802)
- ▶ Financial Memoranda for MMDAs-June, anahG)2004 , .oN ,ettezaG 20th August, (2004)
- ▶ Local Governance Act 2016 (Act 936)

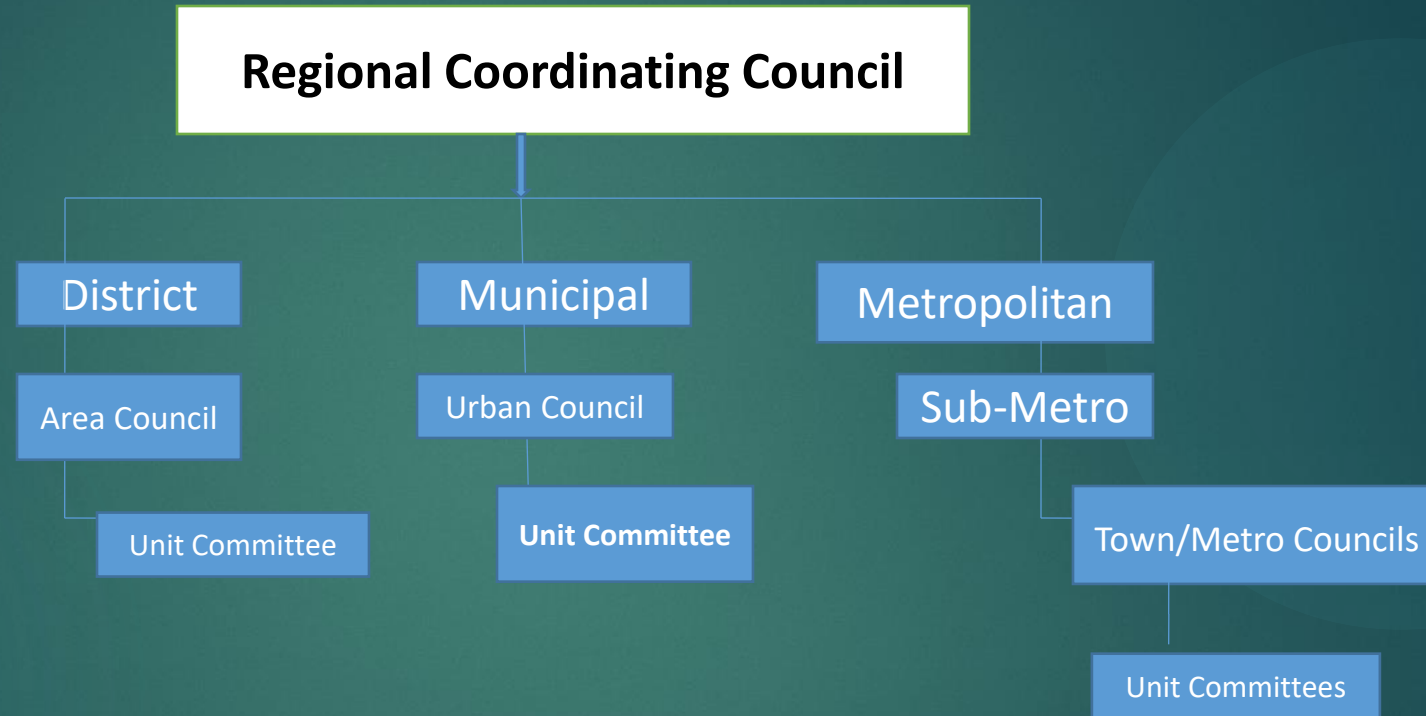
# DECENTRALISATION

- ▶ Decentralization is the transfer of functions, means (funds) and competence (know how) to the District Assemblies from the Central Gov't, Ministries, Departments and Agencies.
- ▶ Decentralization involves the setting up or encouraging some form of popular participation in management or ownership of assets, resources and services.
- ▶ It is the transfer of functions from Central Government to local governments and Non-Governmental organizations" (Ahwoi 2010:114)

# Local Government Structure in Ghana

- ▶ Regional Coordinating Council
- ▶ Four-tier Metropolitan and
- ▶ Three-tier Municipal/District Assembly
- ▶ Sub Metropolitan/District Councils
- ▶ Urban/Town/Area/Zonal Councils
- ▶ Unit Committees

# Local Government Structure



# Membership of Municipal/Metropolitan/District Assembly

- ▶ The District Chief Executive (DCE)
- ▶ 70 percent Elected Assembly Members
- ▶ Not more than 30 percent of the members appointed by the President in consultation with Traditional Authorities and interest groups in the district
- ▶ Member (s) of Parliament representing constituencies within the district (non voting members)

# Functions MMDAS

- ▶ Provision of infrastructure (schools, clinics, etc)
- ▶ Provision of municipal services (sanitation, water , play grounds ,etc)
- ▶ Formulation and approval of budget, fees and fines of the district .
- ▶ Making of Bye-laws .
- ▶ Levy and collect taxes, rates, fees, etc to generate revenue .
- ▶ Promotion of justice by ensuring ready access to the courts in the district. Act 936 :

# Substructures

- ▶ Sub-Metropolitan Councils
- ▶ Urban Councils
- ▶ Zonal Councils
- ▶ Town/Area Councils
- ▶ Unit Committees

# Membership of Area Councils

- ▶ Unit Committees (not more than 10)
- ▶ Hon. Assembly Members (not more than 5)
- ▶ Traditional Authorities – (no voting right)



# PROJECTS AND PROGRAMMES

PRESENTED BY HON. ASAAH MENSAH

# EDUCATION

- ▶ Construction of 1 no 2-Unit Kindergarten Block at Ayiem
- ▶ Construction of 1 no. 3-Unit Classroom Block at Obrayebona
- ▶ Construction of 1 no. 2-Unit Kindergarten Block at Mpohor SDA Basic School
- ▶ Supply of school furniture
- ▶ Construction of 1 no 6-Unit Classroom Block at Edaa
- ▶ Construction of 1 no 6-Unit Classroom Block at Wiredukrom

# PICTURES

6-Unit Classroom Block at Wiredukrom



2-Unit Kindergarten Block at Ayiem



# PICTURES

6-Unit Classroom Block at Edaa



3-Unit Classroom Block at Obrayebona - Ongoing



# PICTURES

School Furniture



2-Unit Kindergarten Block at Mpohor SDA Basic School - Ongoing



# HEALTH

- ▶ Construction of 60-Bed Facility District Hospital Complex
- ▶ Remodelling and Expansion of the Mpohor Health Centre
- ▶ Construction of 1 No. CHPS Compound at Tumantu

# PICTURES

Construction of 60-Bed Facility District Hospital Complex (Agenda 111)



Remodelling and Expansion of the Mpohor Health Centre



# PICTURES

Construction of 60-Bed Facility District  
Hospital Complex (Agenda 111)



# AGRICULTURE

- ▶ Support the Ghana Productivity Safety Net Project (GPSNP) at Ayiem, Adum Bansa, Manso and Tumentu
- ▶ Construction of Shed and Store Room for Agric Equipment for Mpohor District
- ▶ Training of farmers on new and improved methods of farming

# PICTURES

Oil Palm Plantation at Ayiem, Manso and Adum Banso



Cocoa Plantation at Tumentu



## Construction of 1no. 40-Stall Unit Market Shed at Manso



# WATER AND SANITATION

- ▶ Drilling and Construction of Borehole Water (Hand pump and mechanised) at various communities. (Bowobrayie, Ayiem, K9 Mpohor, Yarbiw, Edaa Kromantse, T-Junction (AtaBogoro), Anyinase, Wiredukrom)
- ▶ Medical screening of food vendors
- ▶ Organization of communal labour

# PICTURES

Borehole Water (Hand pump) at Manso



MEDICAL SCREENING OF FOOD VENDORS



# PICTURES

DCE TAKING PART OF COMMUNAL LABOUR AT MPOHOR



MP AND DCE WITH COMMUNITY MEMBERS BEFORE THE ACTUAL WORK BEGUN



## SOCIAL WELFARE AND COMMUNITY DEVELOPMENT

- ▶ Distribution of items to People with Disabilities
- ▶ Support of all LEAP activities
- ▶ Support of the Ghana Employment and Social Protection

# PICTURES

PRESENTATION OF ITEMS TO PWD BENEFICIARIES



PRESENTATION OF ITEMS TO PWD BENEFICIARIES



## ROADS

- ▶ Grading and maintenance works on Obrayebona Road
- ▶ Grading and maintenance works on Mpohor Town Roads (8km)
- ▶ Grading and Maintenance works on Amuzukrom - Manso Feeder Road (6km)

# PICTURES

MPOHOR TOWNSHIP ROADS



OBRAYEBONA ROAD

